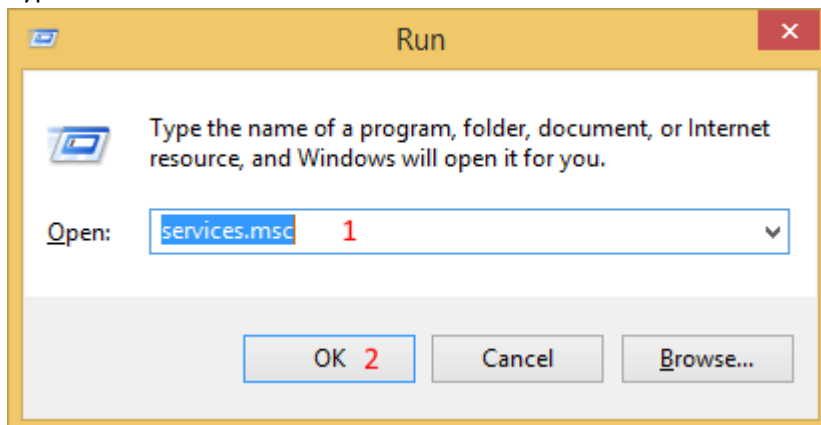


How to Resolve “Port Used By System” Error - IIS

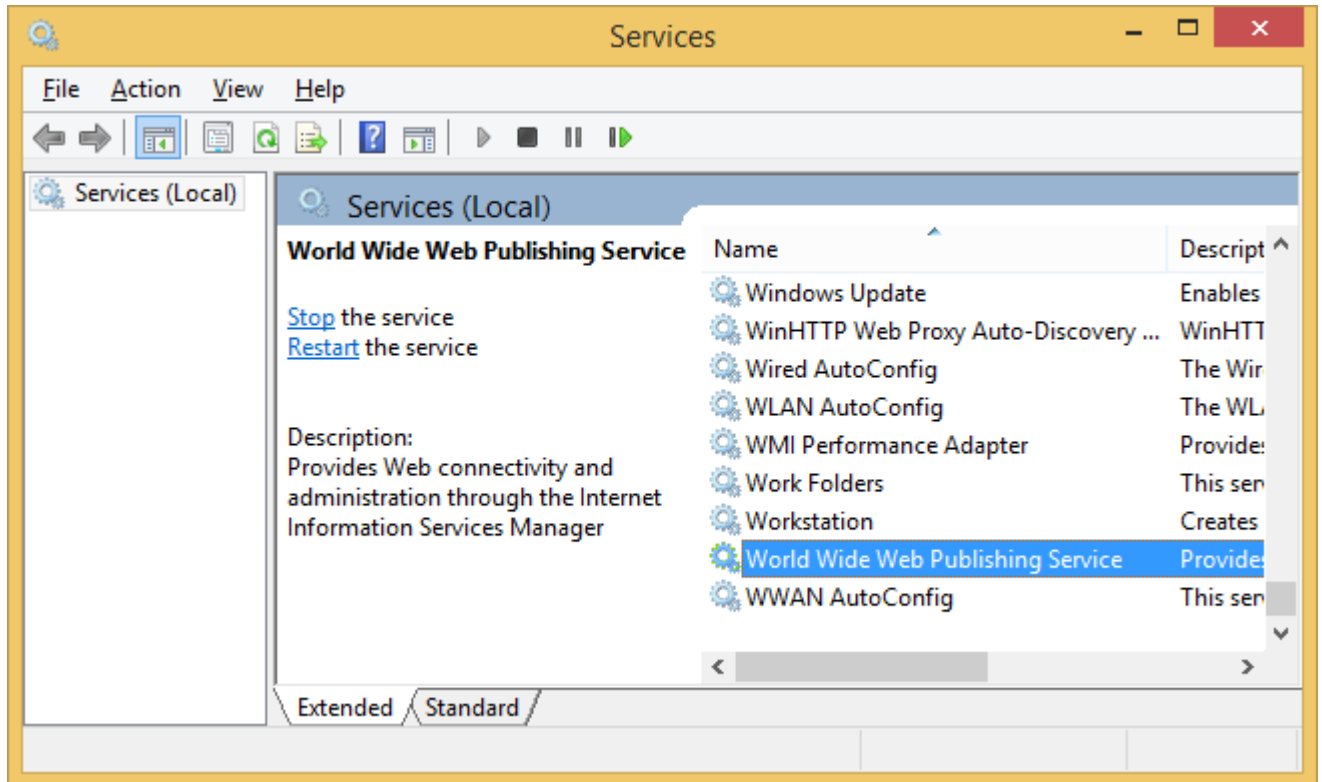
- 1) Press the Windows key + 'R'



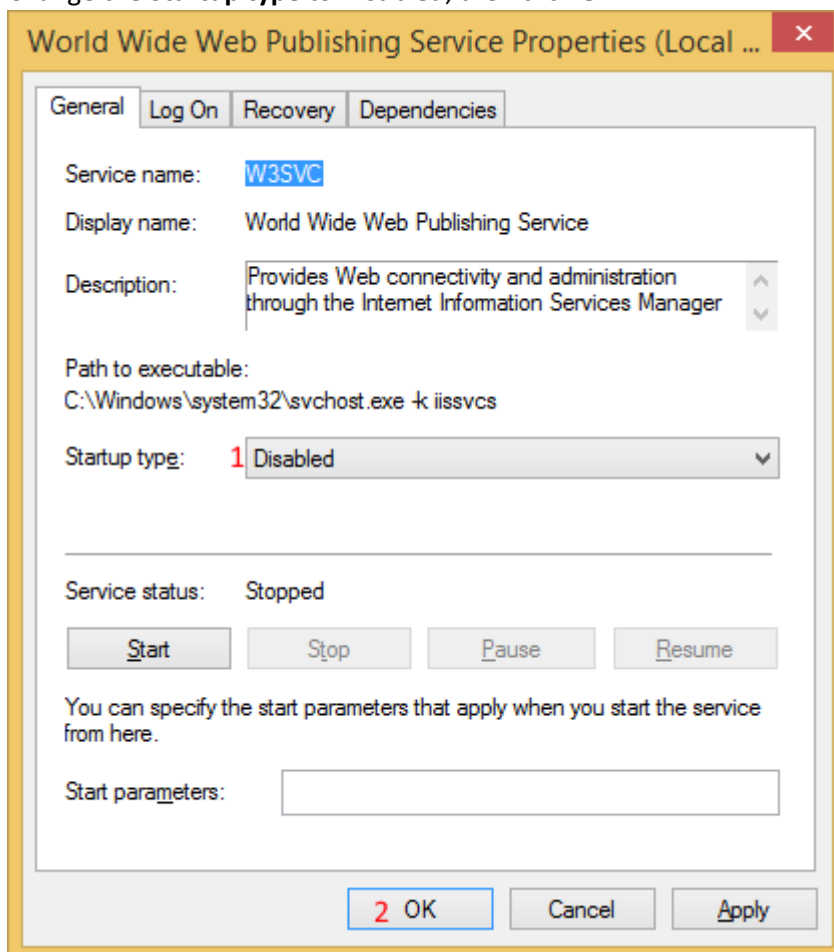
- 2) Type **services.msc** into the **Run** window and click OK



- 3) In the **Services** window, locate **World Wide Web Publishing Service** and double click it



- 4) Change the **Startup type** to **Disabled**, then click **OK**



- 5) Restart your computer and try starting Apache again