

How to Resolve “Port Used By System” Error

The most common cause of this issue is a service called BranchCache. BranchCache is not needed on most PCs and is only useful inside business networks, where there is a cluster of PC's at a remote branch (hence the name).

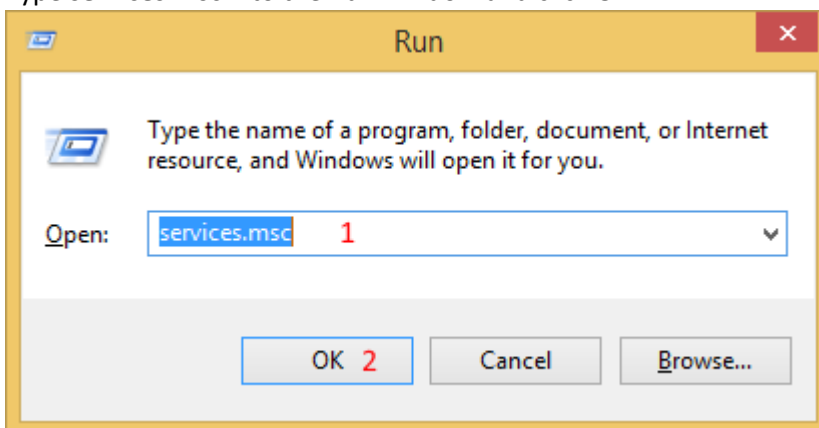
If your PC is not part of a corporate network, there is no reason to have this service enabled.

The following instructions will help you disable the service.

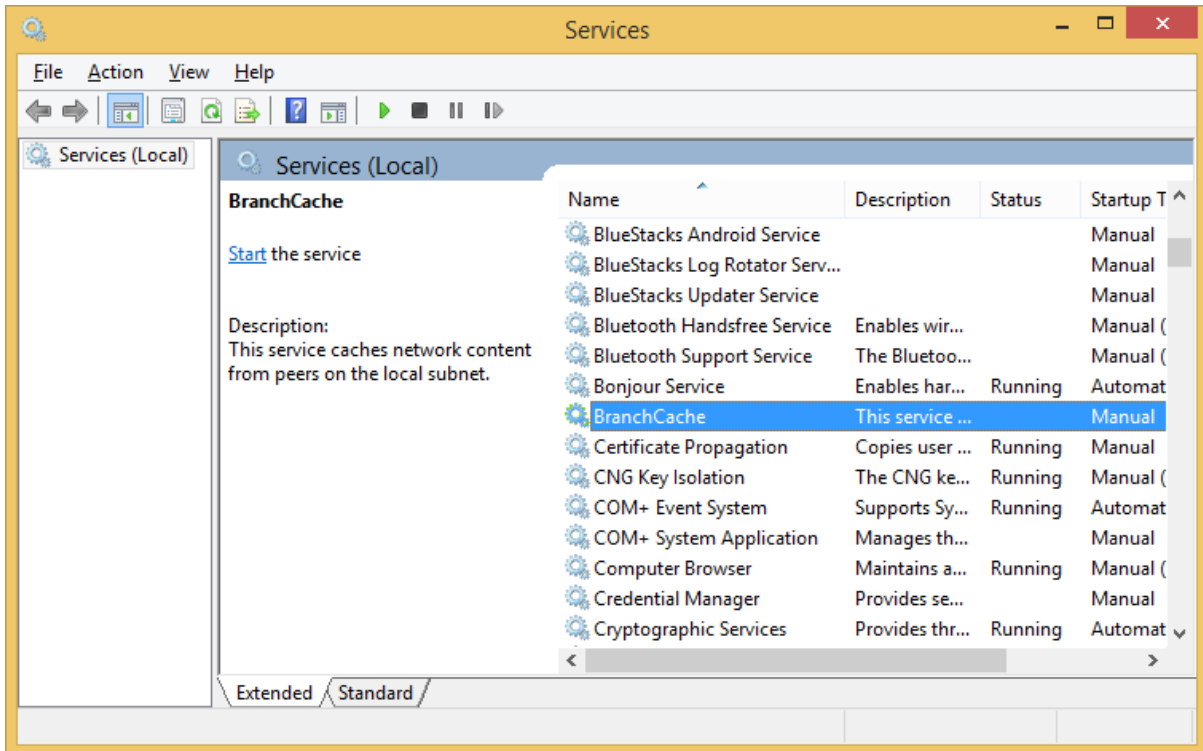
- 1) Press the Windows key + 'R'



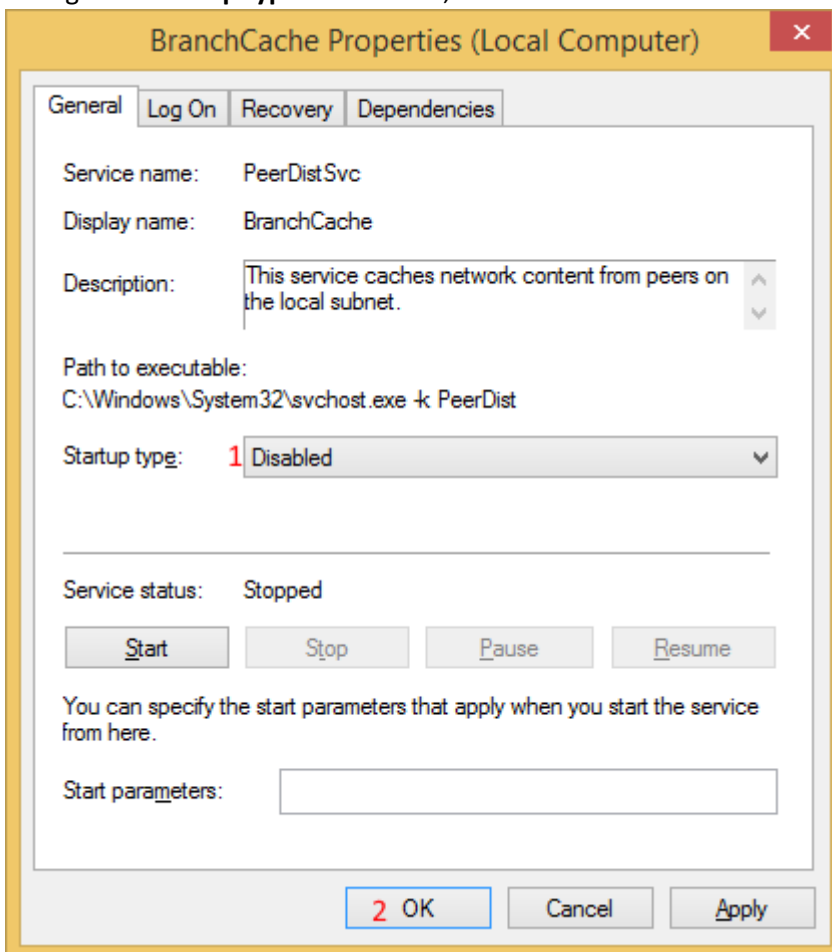
- 2) Type **services.msc** into the **Run** window and click OK



3) In the **Services** window, locate **BranchCache** and double click it



4) Change the **Startup type** to **Disabled**, then click **OK**



5) Restart your computer and try starting Apache again